



Columbus Koalas Connections

Volume 7, Issue 13
December 22, 2011



IMPORTANT DATES:

- Thursday, December 22:
(11:27 AM Dismissal)
- Thursday, December 22:
MORNING BOYS AND GIRLS CLUB ONLY—THERE WILL BE NO BCC PROGRAMMING AT COLUMBUS IN THE PM. BUSING IS AVAILABLE TO DOWNTOWN BCC—SEE MISS ANNIE FOR PERMISSION SLIP.
- Friday, December 23—
Monday, January 2:
NO SCHOOL
NO BOYS AND GIRLS CLUB.
- Tuesday, January 3:
Welcome Back to School
- Wednesday, January 4:
Special Friends Luncheon
- Thursday, January 5:
Authors Peter & Connie Roop visit Columbus students:
K-2nd at 8:45am
3rd-6th at 9:45am.
- Friday, January 6:
Movie Night—SMURFS,
sponsored by Columbus PTA
6-8 PM
- Monday January 9:
PTA Meeting 5pm
- Tuesday January 10:
PAW Reading Assembly
12:15-12:30
- Friday, January 20:
11:27 Dismissal
PM NO SCHOOL
PM NO Boys & Girls Club at Columbus.
- Kindergarten Registration:
January 23- January 27
- Friday, February 10:
School Dance, 7-9 PM

Greetings everyone,

It has been a yearly holiday tradition here that the students celebrate the holidays together by decorating and having a cookie with their classmates and teacher(s). We've always been fortunate to have volunteers who make the cookies and donate frosting. This year is no exception. The event will take place for the students on Wednesday and Thursday this week.

Happy Holidays from The Staff at Columbus Elementary School & ABS

AUTHOR VISIT: PETER AND CONNIE ROOP COMING TO COLUMBUS SCHOOL IN JANUARY

We are going to have a visit from Peter and Connie Roop on Thursday, January 5th! K-2nd will visit from 8:45 to 9:30 and 3rd through 6th graders will have their visit from 9:45 to 10:30. Books will be available to purchase after the author visit.

PAW READING CALENDARS

Students using planners will have a PAW reading calendar stapled in it, and students using take home folders will keep their reading calendar in their folder. Reading is a component of the Columbus School mission and the compact each of you signed at parent-teacher conferences. Each night, your child should be reading or read to. The PTA acknowledges the dedication from each student by rewarding them with a token each month. All parents have to do is sign the calendar stating that your child has been reading or being read to. Thank you so much for your support! The next reading celebration is during our PAW Celebration on Tuesday, January 10th. Those students handing in their December PAW reading calendar will be recognized and receive a token reward at that time.

DISCOVER THE WORLD THROUGH WORLD LANGUAGE!

Sixth grade students will soon begin registering for middle school. For most, it will be the first opportunity for formal study of a second language. Students can choose French, German, or Spanish. The choice of which language to study is an important one, so to help in this process, world language teachers have created a presentation that will be shown in sixth grade classrooms. This will give students a better idea of what world language class will be like in middle school and help students make an informed decision about which language to study. A copy of this presentation and an informative brochure are available on the Appleton Area School District website at: <http://www1.aasds.k12.wi.us/sp/dept/ACI/worldlang/Pages/middleschoolwl.aspx>.

WEATHER—CLOSINGS & DELAYS AND PROPER DRESS

Please tune in to the local news for possible school closings and delays when the weather seems exceptionally snowy or cold. You can also check our website for delays and cancellations (www.aasd.k12.wi.us). In the event of a 2-hour delay due to inclement weather or other unforeseen emergency, elementary school will start at **10:27am** and Title I classes would be cancelled. PM Classes would run as usual.

Also, please be sure your child is dressed appropriately for the weather and outdoor recess.

KINDERGARTEN REGISTRATION

The Appleton Area School District is conducting Kindergarten Registration for the 2012-2013 school year. Parents should register their Kindergarten child at their neighborhood school. Registration is being held in the school office during the week of January 23, 2012 from 9 AM—3:30 PM. If you know of families new to our area, please have them call the school office. Thank you!!

LOST AND FOUND ITEMS

We have accumulated a large number of items that have not been claimed. A table has been set up near the elevator. Please take a look to see if any of the items belong to your child/children. Thank you!

CELEBRATING 1/2 BIRTHDAYS

In an effort to give all students recognition and a special day to celebrate their birthday, we will be recognizing 1/2 birthdays. All of the students celebrating a birthday during the summer months, when school is not in session, will have their birthday announced on the 1/2 day.

STUDENT SAFETY

Students should arrive no earlier than **8:10 AM** for the start of the school day. There are still many students arriving prior to that time. There is no playground supervision until **8:10 AM**.

If students come for breakfast at 7:55 AM, they should immediately enter through the rear playground doors near the slides. All students are to enter in the morning and exit in the afternoon at the rear of the building. These doors are then locked and parents and visitors must enter through the Oneida Street entrance, buzz the office, and register in the office. All visitors, parents, and staff are required to wear identification while in the AASD school buildings. Please step in the office to get a visitor ID and register. It is important that we all follow these safety measures for the security of the children. Thank you for your cooperation.

COUGH DROPS / THROAT LOZENGES:

With cold and cough season fast approaching, we are asking parents to refrain from sending cough or throat lozenges to school. These small, slippery, hard, discs can become a choking hazard for children. Instead, please send your child to school with a water bottle if he/she is experiencing a cough or scratchy throat. Frequent sips from a water bottle will keep the throat moist and greatly soothe a scratchy throat and calm a cough. If you feel that your child does need to have cough drops at school, a medication form will need to be completed by the parent and turned in to the office. Thank you for your understanding and cooperation.

GENERAL MILLS BOX TOPS, MILK TOPS, POP TABS, TARGET, OFFICE DEPOT, BEST BUY

Keep saving General Mills Box tops! This money benefits the Columbus School PTA and their many projects. We have been able to accumulate wonderful earnings!

Keep saving milk tops as the money earned is used to purchase technology for Columbus and keep saving pop tabs as they are collected and donated to help those in need.

If you plan on shopping at Target, Office Depot, or Best Buy remember to keep Columbus School in mind. At Office Depot and Best Buy, just mention that you would like your bill to be reflected to Columbus School. At Target, if you use your Target charge card, Columbus School receives points.

SUMMER SCHOOL 2012

In case you are in need of the summer school dates for planning purposes, Columbus Summer School will be in session during the following dates: June 18-29 / No Summer School Week of July 4th / July 9-20

APPLETON AREA SCHOOL DISTRICT NOTICE

INTRA-DISTRICT OPEN ENROLLMENT INFORMATION/TIMELINES GRADES K-12 ELEMENTARY, MIDDLE, AND HIGH SCHOOL

- By January 3 Intra-District (within the AASD) Open Enrollment Transfer Request Forms will be available after Winter Break in all schools and at the Attendance Office (531 N Morrison Street). Any parent considering the open enrollment option should request a form.
- By January 31 Intra-District Open Enrollment Transfer Request Forms should be returned to the Attendance Office, 531 N. Morrison Street, Appleton, WI 54911 or mailed to P.O. Box 2019, Appleton, WI 54912.
- By March 1 Parents will be notified of the status of their Open Enrollment request.

Inter-District (out-of-district) State Open Enrollment online applications will be available in February from the Wisconsin Department of Public Instruction (DPI) and can be obtained from the AASD Web Site (www.aasd.k12.wi.us, click on the **Parent** link, click on the **Open Enrollment** link). The timeline for accepting Inter-District applications is from February 6 through February 24, 2012. Absolutely no applications will be accepted after 4:00 PM on Friday, February 24, 2012.

DISTRITO ESCOLAR DEL AREA DE
APPLETON
AVISO

INFORMACION Y PLAZO DE INSCRIPCCION
ABIERTA DISTRITAL
GRADOS K-12
PRIMARIA, SECUNDARIA Y PREPARATORIA

Hasta Enero 31 Las formas de solicitud de Transferencia de Inscripción Abierta estarán disponibles en todas las escuelas y en la Oficina de Asistencia y Transportación (531 N Morrison Street). Todos los padres que consideren la opción de Inscripción Abierta deben solicitar una forma.

Hasta Enero 31 Las solicitudes de Transferencia de Inscripción Abierta deben reenviarse a la Oficina de Asistencia y Transportación, 531 N. Morrison Street, Appleton, WI 54911 o al Apartado Postal P.O. Box 2019, Appleton, WI, 54912

Hasta Marzo 1 Se avisará a los padres el estado de su solicitud de Inscripción Abierta.

Inscripción Abierta externa al Distrito. Las formas estarán disponibles en Enero y pueden conseguirse ya sea en la Oficina de Asistencia (531 N. Morrison Street) o el Centro Administrativo (122 E. College Avenue, Suite 1A). Las fechas de aceptación de solicitudes externas al Distrito es del 6 al 24 de Febrero de 2012. Absolutely no applications will be accepted after 4:00 PM on Friday, February 24, 2012.

APPLETON IB THAJ TSAM TSEV KAWM
NTAWW
TSHAJ TAWM

IB THAJ TSAM TSEV KAWM NTAWW
NTAUB NTAWW/SIJHAWM TXOG TEEV NPE MUS
KAWM LWM LUB TSEV KAWM NTAWW
HOOB K-12
ELEMENTARY, MIDDLE, AND HIGH SCHOOL

Lub 1 hli ntuj,
Hnub tim 3
Cov ntaub ntawv teev npe hloov mus kawm lwm lub tsev kawm ntawv muaj nyob rau hauv txhua txhua lub tsev kawm ntawv thiab ntawm lub hauv paus tsev kawm ntawv, chaw nyob yog (531 N Morrison St, Appleton) Txhua txhua tus niamtxiv twg xav hloov tsev kawm ntawv rau menyuam yuav tau mus nqa thiab ua daim ntawv teev npe/form no.

Lub 1 hlis ntuj,
Hnub tim 31
Cov forms lossis daim ntawv teev npe hloov tsev kawm ntawv yuav tsum xa tuaj kom txog rau qhov chaw:
Attendance & Transportation Office,
531 N. Morrison Street, Appleton, WI
54911.

Lub 3 hlis ntuj,
Yuav qhia rau cov niamtxiv paub seb lawv tus/cov menyuam puas tau mus kawm lub tsev kawm ntawv uas tau teev npe rau.

Daim ntawv teev npe no yuav muaj rau lub 1b Hlis Ntuj no thiab mus nqa tau ntawm Attendance Office (531 N. Morrison Street) los yog ntawm Administrative Center (122 E. College Avenue, Suite 1A). Lub sij hawm txais daim ntawv teev npe rau cov menyuam uas tsis kawm hauv Appleton Ib Thaj Tsam Tsev Kawm Ntawv no yog lub 2 Hlis Ntuj, hnub tim 1 mus txog lub 6 Hlis Ntuj, hnub tim 24, xyoo 2012 no. (Feb. 6-24, 2012). Absolutely no applications will be accepted after 4:00 PM on Friday, February 24, 2012.

PBIS NEWSLETTER

12/09/11

PBIS - AN OVERVIEW

Positive Behavioral Interventions and Supports (PBIS) is a systemic approach to proactive, school-wide discipline based on a Response to Intervention (RtI) model. PBIS applies evidence-based programs, practices, and strategies for all students to increase academic performance, improve safety, decrease problem behavior, and establish a positive school culture. Schools implementing PBIS build on existing strengths, complementing and organizing current programming and strategies.

The PBIS model has been successfully implemented in thousands of schools in the United States and five (5) international countries, resulting in dramatic reductions in disciplinary interventions and increases in academic achievement. Data-based decision making is a hallmark of PBIS, allowing successes to be easily shared with all relevant stakeholders. The PBIS framework is being implemented in approximately 35% of the schools in Wisconsin and twenty (20) schools in the AASD are utilizing the PBIS framework. *The Four Elements of PBIS include:*

Systems: Policies, procedures, and decision-making processes that consider school-wide, classroom, and individual student systems.

Data: Guide decision-making processes and measure outcomes.

Practices: Strategies and programs that are used to enhance student learning outcomes and teacher instructional approaches.

Outcomes: Academic and behavioral targets that are measured using the gathered data.

These four elements allow schools increased success in providing all staff and students with a framework that will build upon positive social competence allowing all students the opportunity to be successful in and out of the school setting. Students being able to take newly learned social skills and apply them to other environments are a crucial key to the PBIS framework success.

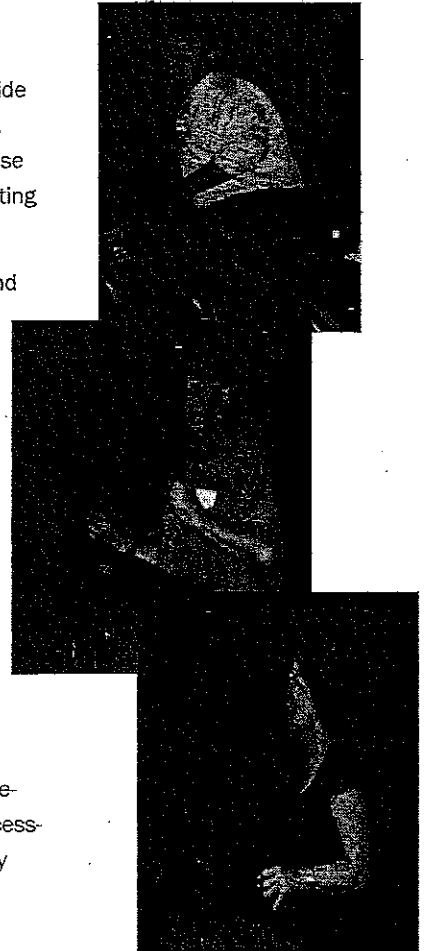
PBIS - A BRIEF HISTORY WITH NATIONAL AND STATE STATISTICS



PBIS is now being implemented in all states in the United States and five (5) international countries. In the United States, 18,000+ school districts are implementing the PBIS framework. PBIS roots date back to 1994 when the University of Oregon assisted a middle school in Eugene and has significantly grown over the years. Although the PBIS framework has been introduced into some of our schools and school districts for

approximately six years in Wisconsin, our state coordinator and state data coordinator weren't hired to lead the state of Wisconsin until November 2009. Since November 2009, approximately 35% of the state and 850+ schools have been trained and are implementing the PBIS framework. At the National PBIS Conference in October, Wis-

consin was highlighted as the state that is moving forward with the framework at the fastest pace in the United States in infusing the framework into existing character education programs ~ an honor that we are very proud of in Wisconsin and in the Appleton Area School District!

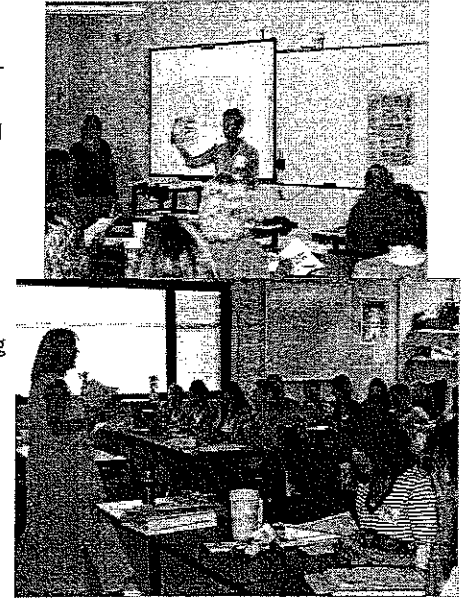


PBIS - PROFESSIONAL STAKEHOLDERS SUPPORTING SCHOOLS

We are very fortunate to have Gary Mulry, AASD Positive Behavioral Support Specialist trained to be a Wisconsin Universal PBIS Trainer. This has allowed the AASD the opportunity to train many other support groups in implementing the PBIS framework with fidelity and ensuring that all students are supported with a positive and comprehensive social competence framework by multiple

stakeholders. Over the past three (3) years in addition to training staff members at twenty (20) of our district schools, Gary has trained the AASD teacher substitutes, AASD paraprofessional substitutes, and the AASD summer school staff. Additionally, Gary has trained members of the YMCA and Boys/Girls Club who support our students in before school/after school programs. Many of

the school's PSL Officers and members of Outagamie County Human Resources have also received training. Having many of the stakeholders who work with our students in the school setting more prepared to support their affective education has been a win-win for the students and the professionals who support the schools.



REFERENCES FOR APPLETON AREA SCHOOL DISTRICT (AASD) PBIS INFORMATION

To find the answers to those pressing questions you have about PBIS, all you have to do is remember the following key references. *First*, there is a Sharepoint page available on the AASD webpage that gives an overview of PBIS and provides many resources. The link to the PBIS Sharepoint site is titled "Character Education-PBIS" and is found on the left sidebar of the Sharepoint page.

Click on the link and it will open up a great source of information for all aspects of PBIS from information specific for parents, to teacher ready lesson plans for social skills. *Secondly*, there are brochures available in each school office to be shared with members of the community who would like to learn more about PBIS in the district. An electronic copy is also available on Sharepoint.

Finally, below this article, please find a list of AASD school personnel who oversee the main strands of PBIS in the district. They would welcome the opportunity to answer your questions and support your PBIS efforts. Their contact information can be also be found on Sharepoint to the right of each overview sheet for each PBIS strand identified on Sharepoint.

"Make the biggest impact with the smallest change"

PERSONAL REFERENCES FOR APPLETON AREA SCHOOL DISTRICT (AASD) PBIS INFORMATION

PBIS Initiative:

Judy Baseman
Assistant Superintendent of School Services
basemanjudith@aad.k12.wi.us
Gary Mulry
Positive Behavioral Support Specialist
mulrygary@aad.k12.wi.us
Deb Moreland
Associate Principal - Wilson Middle School
morelanddebra@aad.k12.wi.us

PBIS Universal Tier:

Gary Mulry
Positive Behavioral Support Specialist
mulrygary@aad.k12.wi.us
Deb Moreland
Associate Principal - Wilson Middle School
morelanddebra@aad.k12.wi.us

PBIS Tier 2:

Deb Moreland
Associate Principal - Wilson Middle
morelanddebra@aad.k12.wi.us
Sheree Garvey
Principal - McKinley Elementary School
garveysheree@aad.k12.wi.us

Anti-bullying:

Sheree Garvey
Principal - McKinley Elementary School
garveysheree@aad.k12.wi.us
Jean Herron
Jefferson/Fox River Academy
Guidance Counselor
herronjean@aad.k12.wi.us
Tanya Fenner
Wilson Middle School LD/EBD
fennertanya@aad.k12.wi.us

Educational Materials Review Committee Interest to Serve Application

In Wisconsin, it is the role of the local school board to establish written policies, procedures, and rules for the operation of the schools within the District, to adopt textbooks, and to provide adequate materials and texts which reflect the cultural diversity and pluralistic nature of the American society. In addition, the District shall not discriminate in the selection and evaluation of instructional materials on the basis of sex, race, color, religion, national origin, ancestry, creed, pregnancy, marital or parental status, sexual orientation or physical, mental, emotional or learning disability or handicap. Discrimination complaints shall be processed in accordance with established procedures.

The Board of Education, as the governing body of the District, is legally responsible for all educational materials utilized within the instructional program of the Appleton Area School District. The selection of educational materials is delegated to the professionally trained and certified personnel employed by the school system. The responsibility for coordinating and maintaining qualitative standards in the selection process rests with the Assessment, Curriculum, and Instruction (ACI) department.

In the event that an adult resident or employee of the Appleton Area School District should object to a Board of Education adopted educational material and the objection is not satisfactorily addressed at the school level, the objection will be addressed by the AASD Educational Materials Review Committee. This committee is composed of citizens, parents, professional staff members and students. The task of the Committees is to review the material in question and provide written recommendation(s) to the Superintendent of School regarding its continued use in the District.

I, _____, wish to serve on the AASD Educational Materials Review Committee as a: (*identify one role*)

- parent of a K-6 student
- parent of a grade 7-12 student
- non-parent community member (must be a resident of the AASD)

If selected, I agree to uphold, to my best ability, the following objectives and criteria, as identified in Educational Materials Selection Policy (361.1):

- Materials are selected consistent with the educational goals of the District regarding locally designed standards, State standards, and National standards.
- Materials selected are appropriate for the age, social development, and maturity of students.
- Materials and information shall meet high standards of quality in factual content and presentation.

- Materials and information shall have factual, aesthetic, literary, ethical, or social value.
- Materials and information chosen shall be written/produced by competent and qualified authors and producers.
- Materials and information shall be chosen to represent our pluralistic society and to foster respect for all groups of people who form our society.
- Physical format and appearance of materials and information shall be suitable for their intended use.
- Materials are selected on all levels of difficulty with diverse appeal and differing points of view.
- The selection of materials on political theories and ideologies, religion, public issues, and on topics considered by some to be controversial, is directed toward maintaining a balance representing various views.
- Materials are judged as a whole taking into account the author's/producer's intent rather than focusing on single words, phrases, pictures, or incidents taken out of context.

Further, I commit to giving the time and energy necessary to prepare for and actively participate in all meetings required of this position.

Signature Date

Address: _____

Telephone number: _____

Email address: _____

Forms should be returned to Donna Goetzke, by 5:00 PM on Tuesday, January 3, 2012. No forms will be accepted after that date/time.

Donna Goetzke, School Services
Appleton Area School District
122 E. College Avenue, Suite 1A
Appleton, WI 54911

Should you have questions, please contact any of the following individuals at (920) 832-6161:

Judy Baseman	Val Dreier	Kevin Steinhilber	Ben Vogel
Asst. Superintendent	Asst. Superintendent	Chief Academic Officer	Asst. Superintendent



December 1, 2011

Dear parent,

This fall, the Measures of Academic Progress (MAP) Primary Grades assessments were administered by your child's school. MAP for Primary Grades is a computer-based test that measures how your child is performing in Math or Reading. These tests are typically taken two or three times a year and the results inform teachers about the skills and concepts your child is strong in, as well as the areas that may need more attention throughout the school year.

On November 22nd, Northwest Evaluation Association (NWEA) alerted our partner districts to a technical issue that occurred during the production of the Primary Grades tests. While the issue did not impact the way the tests performed, it did affect the way that they were scored. To correct for this issue going forward, we have already made an updated version of the tests available to your child's school. Additionally, we have re-scored all affected students' test results and the reports that are available to your child's teacher and school district administration.

As a result of this issue, it is possible that your child's score may change. NWEA will be providing your child's school with a detailed report of the scoring changes that includes both the original and re-scored test result for your child. NWEA has determined that re-scoring your child's test will provide your school with the most accurate score possible that can be used alongside other observations and evidence from the classroom to better understand the needs of your child.

NWEA seeks to continually provide the best information we can to inform the educational decisions that our partner school districts make with the children they serve. We recognize that the scoring changes may result in questions. We are working very closely with your child's school to ensure that all questions, big or small, are answered accurately and promptly.

If you have specific questions about your child's score on the MAP for Primary Grades test, we recommend that you reach out to their teacher or school. To learn more about NWEA and Measures of Academic Progress, visit us online at www.nwea.org and click on the **Students and Parents** tab.

Sincere regards,

Donna Schultz

Vice President of Product Management and Test Services, NWEA

Appleton Area School District Calendar 2012-2013

Notes Regarding Bolded Calendar Days

- August 2012**
 22 23 New Teacher Orientation
 & 28 Staff Development
 29 & 30 Staff Orientation - Meetings - Prep
 31 Staff Non-Contract Day
- September 2012**
 3 No School - Labor Day
 4 First Day Elementary, Middle & Senior High Classes
- October 2012**
 24 PM - No Class - Staff Development (E,M)
 25 No Class - AM-Staff Dev/PM-Conf. Comp (E,M)
 25 No Class - Staff Development (S)
 26 No School
- November 2012**
 8 PM - No Class - Parent Conferences (S)
 21 PM - No Class - Conference Compensation (E,M,S)
 22 & 23 - No School - Thanksgiving Break
- December 2012**
 24 to 31 No School - Winter Break
- January 2013**
 1 Winter Break
 2 Classes resume
 18 PM - No Class - Records (E,M,S)
- February 2013**
 15 PM No Class - Staff Development (E,M,S)
- March 2013**
 26 PM - No Class - Parent Conferences (S)
 28 PM - No Class - Conference Compensation (E,M,S)
 29 No School - Spring Break
- April 2013**
 1 to 5 No School - Spring Break
 8 Classes resume
- May 2013**
 17 PM - No Class - Records (E)
 24 PM - No Class - Conference Compensation (E,M)
 27 No School - Memorial Day
- June 2013**
 6 Last Day of School (E,M,S)
 6 PM-No Class- Records (M,S)

February 2013						
S	M	T	W	R	F	S
					1	2
3	4	5	6	7	8	9
10	11	12	13	14	SD	16
17	18	19	20	21	22	23
20	24	25	26	27	28	

March 2013						
S	M	T	W	R	F	S
					1	2
3	4	5	6	7	8	9
10	11	12	13	14	15	16
17	18	19	20	21	22	23
20	24/31	25	SC	27	C	NS

Arbitrary Friday = March 26

April 2013						
S	M	T	W	R	F	S
						6
	NS	NS	NS	NS	NS	
7	8	9	10	11	12	13
14	15	16	17	18	19	20
21	22	23	24	25	26	27
17	28	29	30			

May 2013						
S	M	T	W	R	F	S
			1	2	3	4
5	6	7	8	9	10	11
12	13	14	15	16	R	18
19	20	21	22	23	C	25
22	26	NS	28	29	30	31

Arbitrary Friday = May 15

June 2012						
S	M	T	W	R	F	S
						1
4	2	3	4	5	EMS/R	7
83	9	10	11	12	13	14
185						15

Semester Dates

End of 1st Qtr	November	2
End of 2nd Qtr/Semester	January	18
End of 3rd Qtr	March	22
End of 4th Qtr/Semester	June	6

August 2012						
S	M	T	W	R	F	S
12	13	14	15	16	17	18
19	20	21	NTO	NTO	24	25
4	26	SD	SD	SO	SO	NC

September 2012						
S	M	T	W	R	F	S
						1
2	NS	EMS	5	6	7	8
9	10	11	12	13	14	15
16	17	18	19	20	21	22
19	23/30	24	25	26	27	28

October 2012						
S	M	T	W	R	F	S
	1	2	3	4	5	6
7	8	9	10	11	12	13
14	15	16	17	18	19	20
21	22	23	EMSD	SD/C	NS	27
22	28	29	30	31		

Arbitrary Friday = Oct 23

November 2012						
S	M	T	W	R	F	S
				1	2	3
4	5	6	7	SC	9	10
11	12	13	14	15	16	17
18	19	20	C	NS	NS	24
20	25	26	27	28	29	30

Arbitrary Friday = Nov 20

December 2012						
S	M	T	W	R	F	S
						1
2	3	4	5	6	7	8
9	10	11	12	13	14	15
16	17	18	19	20	21	22
15	23/30	NS/NS	NS	NS	NS	NS

January 2013						
S	M	T	W	R	F	S
			NS	2	3	4
6	7	8	9	10	11	12
13	14	15	16	17	R	19
20	21	22	23	24	25	26
22	27	28	29	30	31	

102 Arbitrary Friday = Jan 16

- E = Elementary School
- M = Middle School
- S = Senior High School
- P = Preschool/Early Childhood
- C = Conference or Conference Compensation
- NC = Non-Contract
- NS = No School (Non-Contract)
- NTO = New Teacher Orientation
- R = Records
- SD = Staff Development
- SO = Staff Orientation
- W = Writing
- IND = Individual