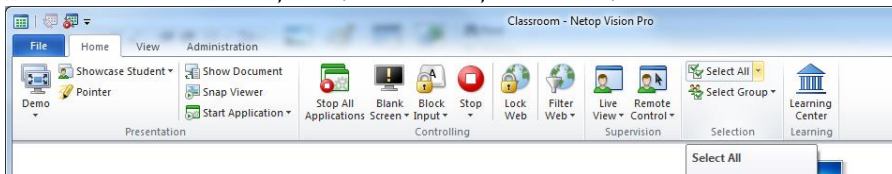
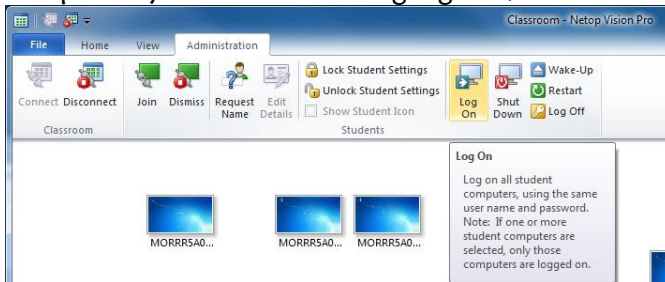


Using Visions in the labs for MAP testing

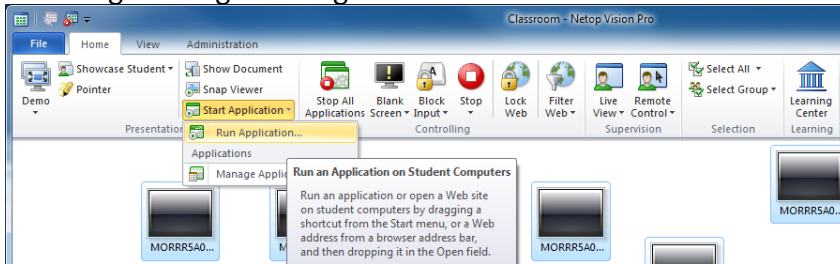
1. Log on to the teacher station, this computer is the one connected to the projector, and will typically have speakers attached. When logged on, Visions should come up by my default. If it does not, start Vision by double clicking on the icon on the desktop.
2. Once in Visions, click on Home, then click on “Select All” toward the right side of the icons.



3. Select the Administration Tab:
4. If the computers are not turned on, click on the “Wake Up” button (Again – make sure all of the computers you want on are highlighted/selected in the light blue).



5. Once on and at the logon screens as seen above. Please make sure you select all of the units you desire to use (CTRL and click the station, or use the “Select All” feature on the “Home” tab).
6. Logon using the “Log On” button under the administration page. Use “AASD\aadexam” to logon.



7. Click on the Home tab, Select All, then choose Start Application. Browse to (or type in) the following path:
C:\Program Files (x86)\NWEA\NWEA Secure Testing Browser\NWEA Secure Testing Browser.exe – click Open, and check “Run Locally”, click OK
8. After your session, you can then use Visions to shut down all of the computers under the Administration tab. Again – be sure to “Select All”.

