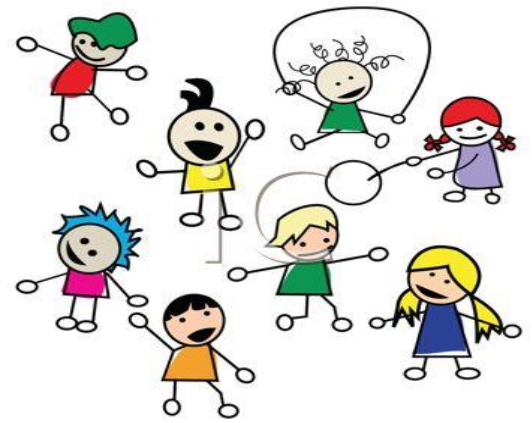


Birth to Five Developmental Screening Days!



The Appleton Area School District's Birth-Five Program and the Outagamie County Birth-to-Three Program have come together to offer developmental screenings for children between the ages of birth-5.

The Developmental Screening is designed to:

Educate families about typical child development and growth

Develop/Expand awareness of available community resources

Identify young children in need of further assessment



The screening will look at important areas of development including:

How your child talks, listens, thinks, moves, and how your child uses his/her hands!



Children ages 3 to 5 must live in the Appleton Area School District.

Children under 3 must live in Outagamie County.

Parents or Guardians do not need to have concerns to schedule a screening!

Community Early Learning Center

Friday, January 27th

Friday, February 24th

Friday, March 17th

Friday, April 28th

313 S. State St., Appleton, WI

8:30AM – 1:45PM



To schedule an appointment

Please call 920-832-6109